



**Introducing**  
**2650 Bristol Circle**  
Oakville, ON





**2650 Bristol Circle**  
Oakville, ON



## Office Space for Lease

- ✓ Open concept office space with 20-foot ceilings
- ✓ Abundance of natural light
- ✓ Fantastic collaborative setting for groups

**M-powering landlords  
and business owners**

**Steve Peres**  
Broker of Record

**416.903.2455**  
[steve@mcommercialrealty.com](mailto:steve@mcommercialrealty.com)





Attract both clients and employees at 2650 Bristol Circle. Highly sought-after Suite 100 offers an abundance of natural light, 20-foot ceilings, a second floor mezzanine area for creative brainstorming and much more. Convenient free surface parking is also provided close to the building.



## Available Suites

### Available Suites

Suite 100 = 4,997 SF (total)  
3,828 SF on ground floor  
plus 1,169 SF second floor/mezzanine

### Net Rent

Years 1-5 \$18.00 psf/yr  
Years 6-10 \$20.00 psf/yr  
Mezzanine from \$10 psf/yr

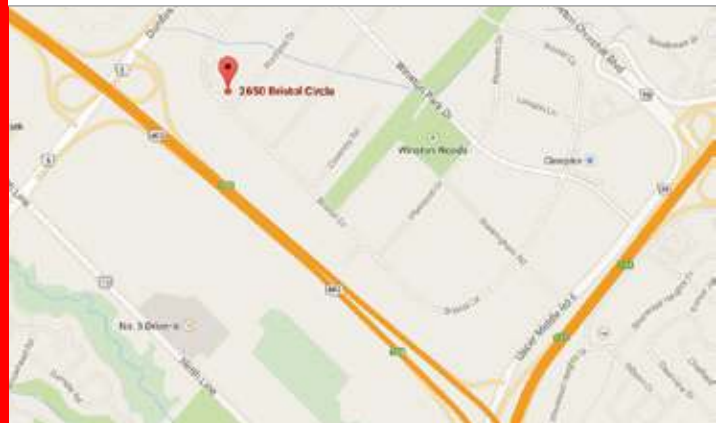
### TMI

\$7.00 psf/yr 2014 plus janitorial and utilities

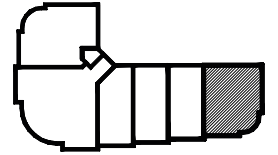
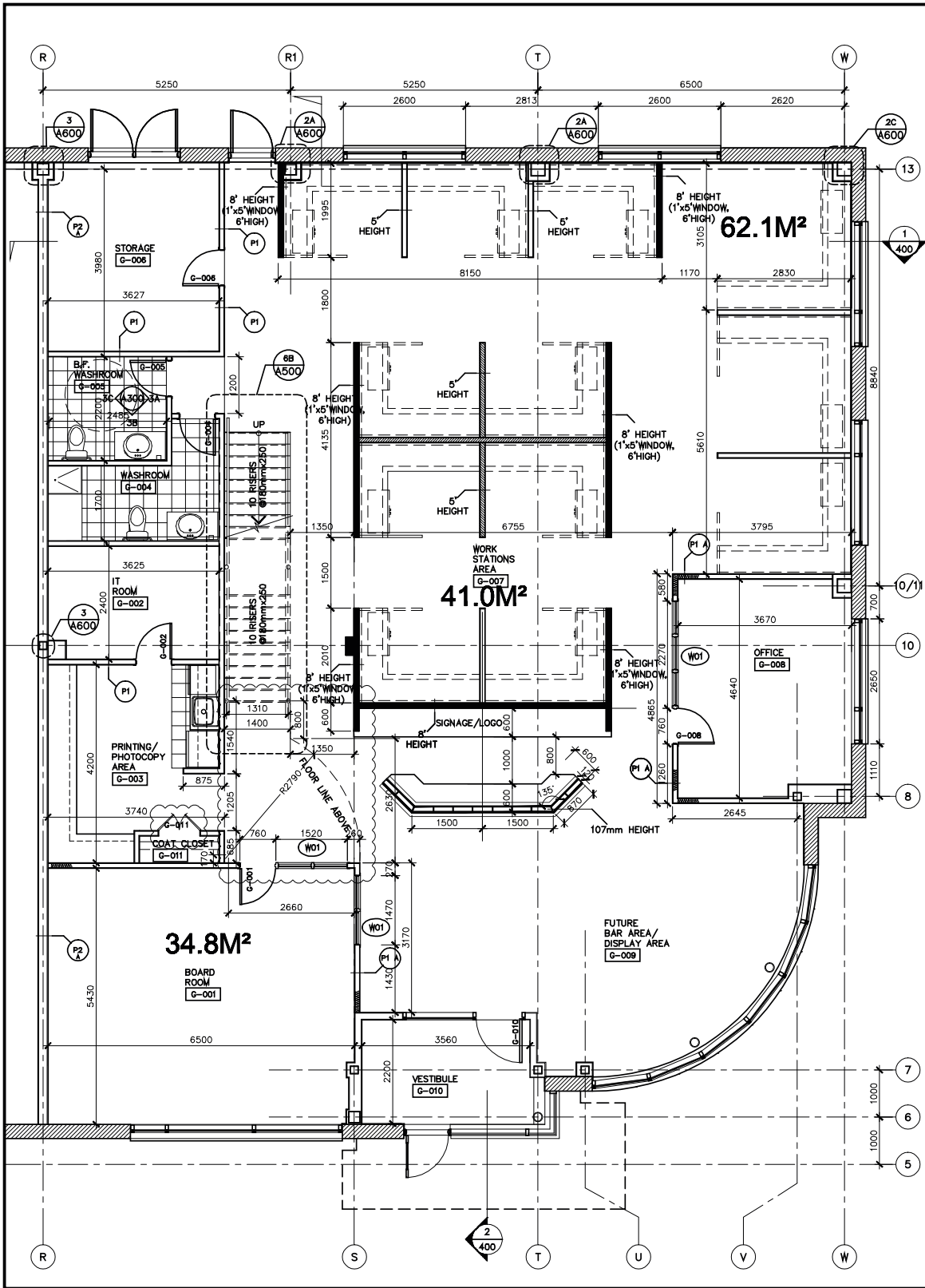
### Occupancy

May 2015

- Easy access to Hwys 403, 407 and QEW
- Adjacent to Oakville's major Dundas St. shopping corridor
- Steps from Tim Hortons, Starbucks, Panera Bread, Montana's, Jack Astors and Milestones



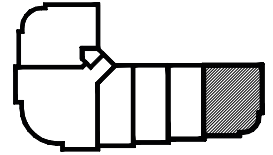
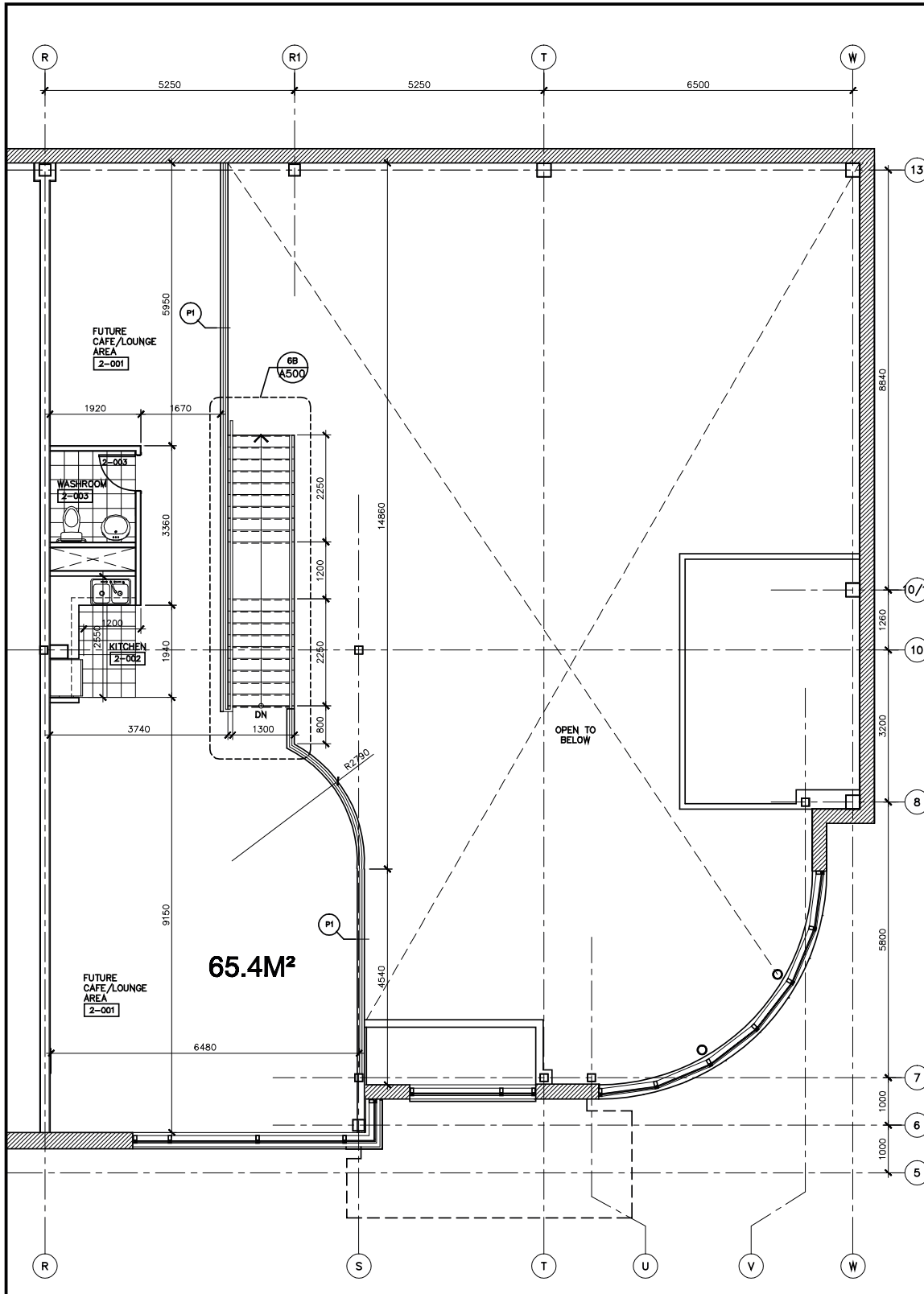
# 2650 BRISTOL GROUND FLOOR



UNIT LOCATION PLAN  
N.T.S.

2 GROUND FLOOR PLAN  
A200 SCALE 1:50

# 2650 BRISTOL MEZZANINE



UNIT LOCATION PLAN  
N.T.S.



1 MEZZANINE FLOOR PLAN  
A200 SCALE 1:50